

# Coastal Bend Workforce Area

(Not Seasonally Adjusted Unemployment Rates by WDA, MSA, & County)

Area	Area Type	Latest Monthly Data January 2018						Previous Monthly Data December 2017				Year Ago January 2017			
		Labor Force	Employment	Unemployment	Rate	M+-	Y+-	Labor Force	Employment	Unemployment	Rate	Labor Force	Employment	Unemployment	Rate
United States	Nation	161,115,000	154,430,000	6,684,000	4.1	0.0	-0.4	160,597,000	154,021,000	6,576,000	4.1	159,718,000	152,076,000	7,642,000	4.6
Texas	State	13,612,796	13,074,267	538,529	4.0	0.0	-0.8	13,591,013	13,053,325	537,688	4.0	13,456,962	12,812,482	644,480	4.8
Corpus Christi	MSA	205,690	193,647	12,043	5.9	0.6	-0.9	206,176	195,292	10,884	5.3	208,664	194,506	14,158	6.8
Coastal Bend	WDA	260,004	244,687	15,317	5.9	0.6	-1.3	261,091	247,239	13,852	5.3	264,668	245,741	18,927	7.2
Aransas	County	10,378	9,543	835	8.0	0.5	1.2	10,411	9,628	783	7.5	10,253	9,551	702	6.8
Bee	County	9,641	9,054	587	6.1	0.6	-1.7	9,742	9,205	537	5.5	10,000	9,218	782	7.8
Brooks	County	2,418	2,245	173	7.2	0.9	-3.3	2,366	2,216	150	6.3	2,476	2,217	259	10.5
Duval	County	4,741	4,453	288	6.1	0.5	-4.2	4,681	4,420	261	5.6	4,890	4,386	504	10.3
Jim Wells	County	16,350	15,276	1,074	6.6	0.6	-3.6	16,427	15,449	978	6.0	16,866	15,151	1,715	10.2
Kenedy	County	262	255	7	2.7	0.3	-1.3	250	244	6	2.4	226	217	9	4.0
Kleberg	County	12,636	11,918	718	5.7	0.8	-1.7	13,132	12,487	645	4.9	13,240	12,257	983	7.4
Live Oak	County	5,319	5,075	244	4.6	0.6	-1.4	5,340	5,127	213	4.0	5,181	4,872	309	6.0
Nueces	County	165,108	156,291	8,817	5.3	0.5	-1.1	165,532	157,585	7,947	4.8	167,717	156,964	10,753	6.4
Refugio	County	2,947	2,764	183	6.2	0.2	-0.5	2,977	2,799	178	6.0	3,125	2,917	208	6.7
San Patricio	County	30,204	27,813	2,391	7.9	0.8	-0.9	30,233	28,079	2,154	7.1	30,694	27,991	2,703	8.8

(M+-) Change in unemployment rate from last month (Increase) (Decrease)

(Y+-) Change in unemployment rate from last year (Increase) (Decrease)

- Earnings for all occupations Coastal Bend, expressed as hourly rate (TWC):

<b>Coastal Bend</b>	<b>All Occupations-</b>	<b>Average \$18.35/hr.</b>	<b>Entry level \$8.58/hr.</b>	<b>Experienced workers \$23.24/hr.</b>	<b>Top 10% \$33.56/hr.</b>
<b>Texas</b>	<b>All Occupations-</b>	<b>Average \$20.97/hr.</b>	<b>Entry level \$8.88/hr.</b>	<b>Experienced workers \$ 27.02/hr.</b>	<b>Top 10% \$39.64/hr.</b>

- Educational Attainment for population 25 years of age and older - Corpus Christi (Census American Fact Finder/American Community Survey):

<b>Less than 9<sup>th</sup> grade</b>	<b>8.7%</b>	<b>12<sup>th</sup> grade &amp; GED</b>	<b>27.7%</b>	<b>Associates degree</b>	<b>7.0%</b>	<b>Graduate or Professional degrees</b>	<b>8.4%</b>
<b>9<sup>th</sup> thru 11<sup>th</sup> grade</b>	<b>9.3%</b>	<b>Some College</b>	<b>25.1%</b>	<b>Bachelors degree</b>	<b>13.8%</b>		

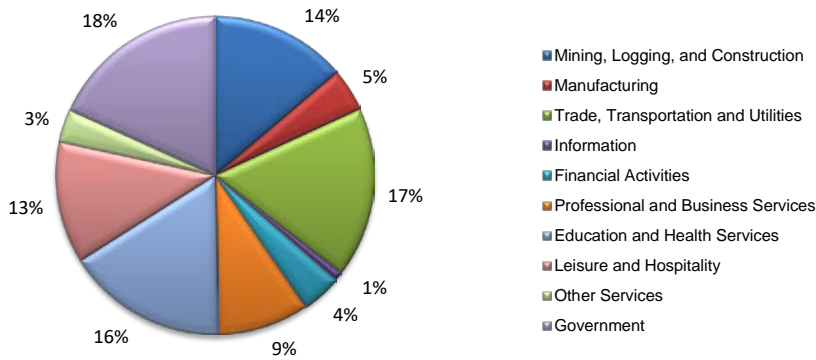
- Median earnings Corpus Christi by education for persons 25 years of age & up (Census AFF/ACS): **\$27,211** (\$36,380 male/ \$22,328 female)

<b>Less than High School</b>	<b>\$15,437</b>	<b>Some College or Associates</b>	<b>\$28,739</b>	<b>Graduate or Professional</b>	<b>\$56,681</b>
<b>High School &amp; GED</b>	<b>\$26,818</b>	<b>Bachelor's</b>	<b>\$44,078</b>		

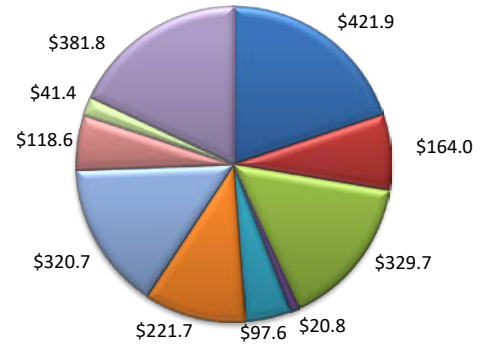
**Equal Opportunity Employer/Program.** Auxiliary aids and services are available upon request to individuals with disabilities.  
Deaf, hard-of-hearing or speech impaired customers may contact **Relay Texas:** 1-800-735-2989 (TDD) and 1-800-735-2988 or 7-1-1 (Voice)

(Aransas, Nueces, San Patricio)

Industry Composition



Wages by Industry (in millions)  
3rd Quarter 2017



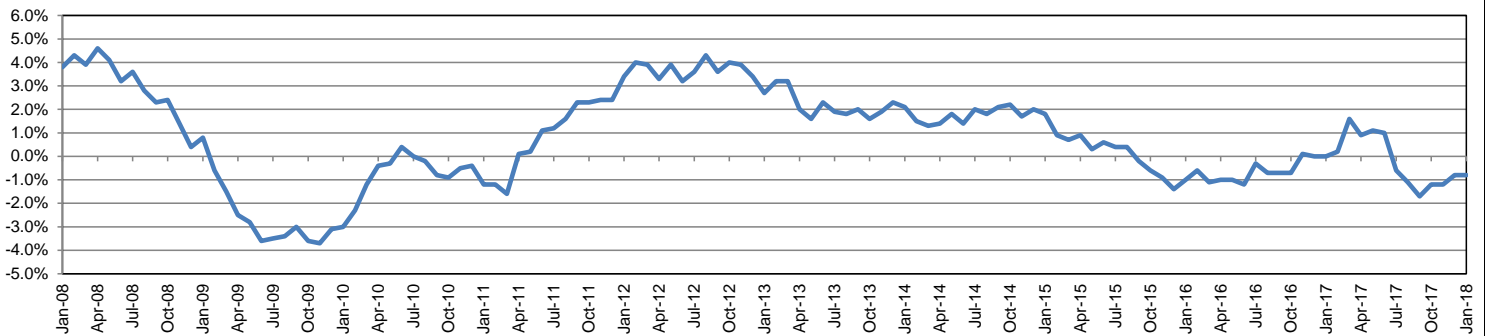
Employment by Industry

				Monthly Change		Annual Change	
	Jan-18	Dec-17	Jan-17	Actual	%	Actual	%
Total Nonfarm	188,500	192,000	190,000	-3,500	-1.8%	-1,500	-0.8%
Mining, Logging and Construction	26,000	26,200	25,700	-200	-0.8%	300	1.2%
Manufacturing	8,200	8,400	8,400	-200	-2.4%	-200	-2.4%
Trade, Transportation, and Utilities	32,600	33,700	33,400	-1,100	-3.3%	-800	-2.4%
Information	1,700	1,700	1,800	0	0.0%	-100	-5.6%
Financial Activities	7,700	7,700	7,600	0	0.0%	100	1.3%
Professional and Business Services	17,500	17,900	16,400	-400	-2.2%	1,100	6.7%
Education and Health Services	30,800	31,100	31,200	-300	-1.0%	-400	-1.3%
Leisure and Hospitality	23,300	23,700	24,400	-400	-1.7%	-1,100	-4.5%
Other Services	6,300	6,400	6,600	-100	-1.6%	-300	-4.5%
Government	34,400	35,200	34,500	-800	-2.3%	-100	-0.3%

Industry Size Class

Size Class	Employees per firm	Number of Firms	September 2017	
			Employment in Size Class	% Total Employment
9	1000+	20	46,101	25.0%
8	500-999	21	13,910	7.6%
7	250-499	50	16,864	9.2%
6	100-249	213	31,427	17.1%
5	50-99	285	19,992	10.9%
4	20-49	782	24,075	13.1%
3	10-19	1,069	14,739	8.0%
2	5-9	1,487	9,808	5.3%
1	1-4	3,484	7,165	3.9%
0	0	844	0	0.0%
Total		8,255	184,081	100.0%

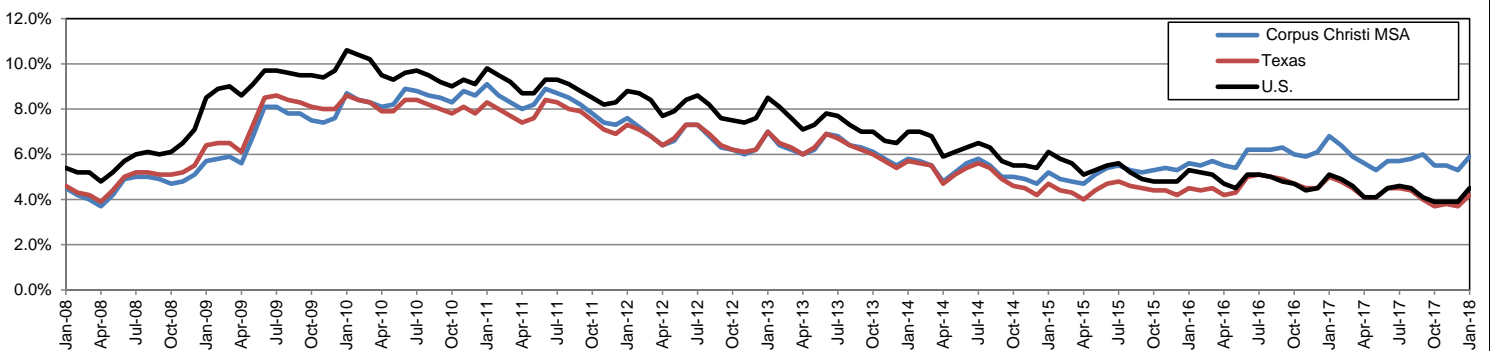
Annual Growth Rate for Total Nonagricultural Employment



Unemployment Information (all estimates in thousands)

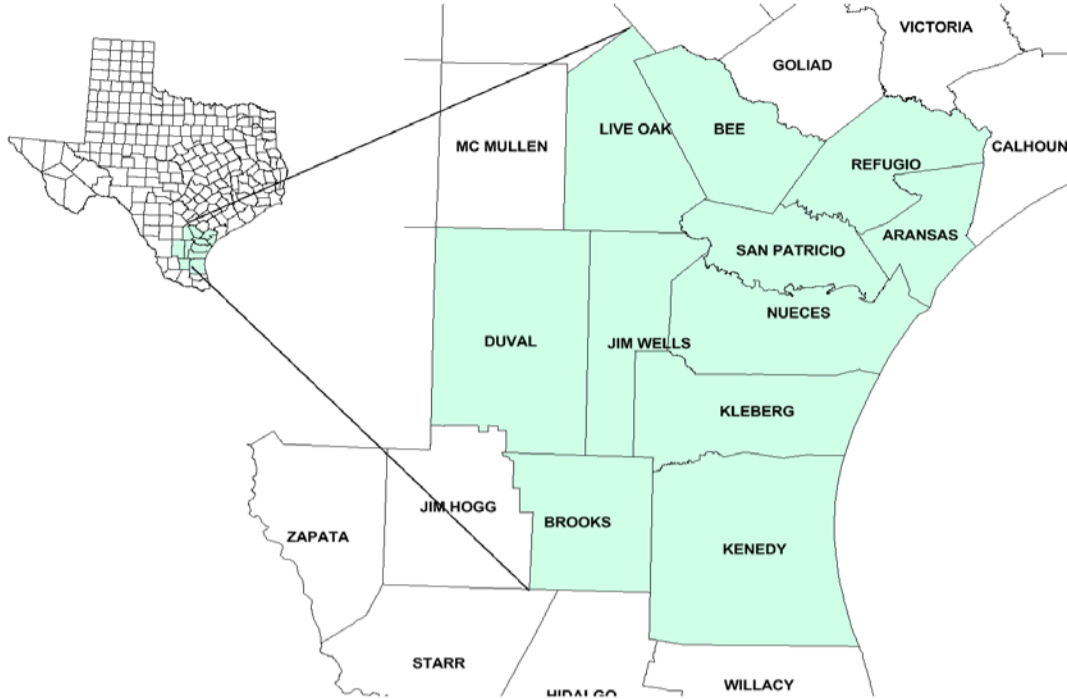
	Corpus Christi MSA				Texas (Actual)				United States (Actual)			
	C.L.F.	Emp.	Unemp.	Rate	C.L.F.	Emp.	Unemp.	Rate	C.L.F.	Emp.	Unemp.	Rate
Jan-18	205.7	193.6	12.0	5.9	13,622.1	13,054.1	568.0	4.2	160,037.0	152,848.0	7,189.0	4.5
Dec-17	206.2	195.3	10.9	5.3	13,598.1	13,096.2	501.8	3.7	159,880.0	153,602.0	6,278.0	3.9
Jan-17	208.7	194.5	14.2	6.8	13,417.3	12,749.0	668.4	5.0	158,676.0	150,527.0	8,149.0	5.1

Historical Unemployment Rates



# Coastal Bend Workforce Development Area

## January 2018



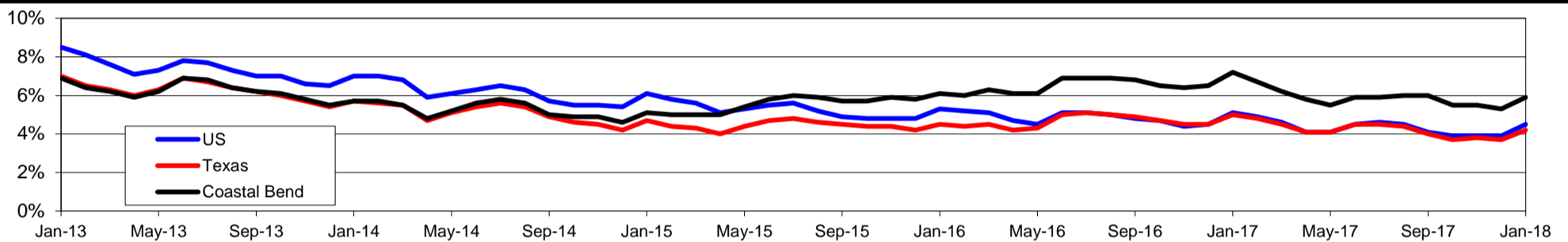
WDA Labor Force Statistics				
	Jan-18	Dec-17	Jan-17	OTY
CLF	260,004	261,091	264,668	-4,664
Employed	244,687	247,239	245,741	-1,054
Unemployed	15,317	13,852	18,927	-3,610
Rate	5.9%	5.3%	7.2%	-1.3%

Texas Labor Force Statistics				
	Jan-18	Dec-17	Jan-17	OTY
CLF	13,622,067	13,598,061	13,417,349	204,718
Employed	13,054,089	13,096,216	12,748,985	305,104
Unemployed	567,978	501,845	668,364	-100,386
Rate	4.2%	3.7%	5.0%	-0.8%

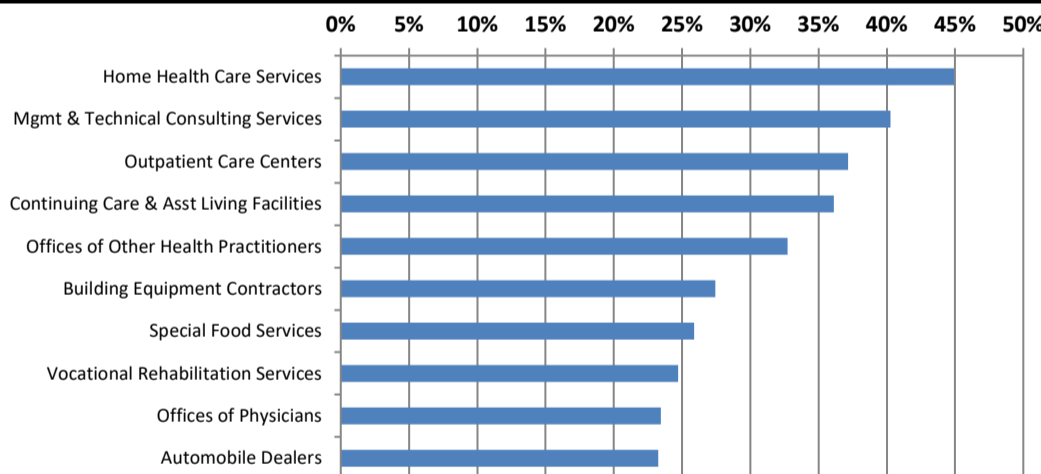
US Labor Force Statistics				
	Jan-18	Dec-17	Jan-17	OTY
CLF	160,037,000	159,880,000	158,676,000	1,361,000
Employed	152,848,000	153,602,000	150,527,000	2,321,000
Unemployed	7,189,000	6,278,000	8,149,000	-960,000
Rate	4.5%	3.9%	5.1%	-0.6%

Continued Claims for the Week of the 12th				
	Jan-18	Dec-17	Jan-17	OTY
WDA	3,406	3,589	4,327	-921
Texas	111,828	108,432	132,086	-20,258

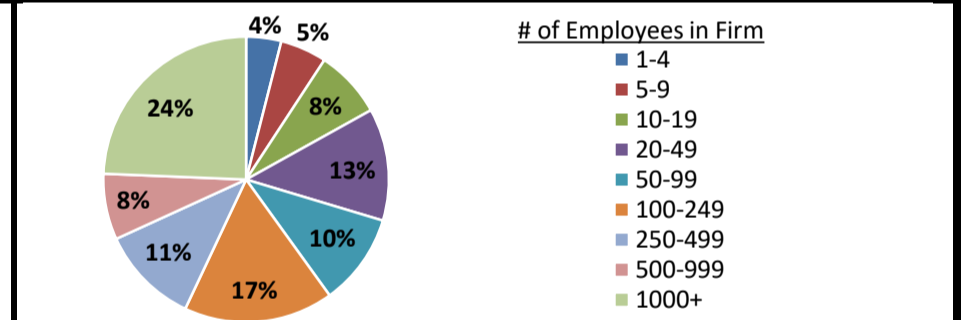
### Historical Unemployment Rates



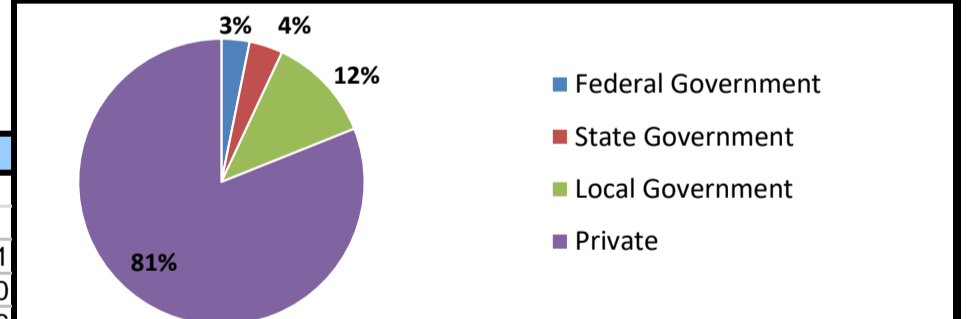
### Projected Fastest Growing Industries in WDA (% growth 2014-2024)



### Employment by Size Class (3rd Quarter 2017)



### Employment by Ownership (3rd Quarter 2017)



### Average Weekly Wage (3rd Quarter 2017)

	Q3 2017	Q2 2017	Q3 2016	Change	
				Quarter	Year
WDA	\$860	\$837	\$861	\$23	-\$1
Texas	\$1,032	\$1,027	\$1,042	\$5	-\$10
US	\$1,021	\$1,020	\$1,027	\$1	-\$6

### Employment by Industry (3rd Quarter 2017, Percent Change)

Industry	Employment	% of total	% Change	
			Quarter	Year
Natural resources and mining	11,271	4.8%	7.4%	19.7%
Construction	23,619	10.1%	-4.3%	-3.5%
Manufacturing	12,384	5.3%	0.0%	-4.5%
Trade, transportation and utilities	43,000	18.4%	-0.2%	-2.2%
Information	2,080	0.9%	-1.9%	-5.5%
Financial activities	9,487	4.1%	0.6%	1.2%
Professional and business services	18,908	8.1%	2.6%	4.0%
Education and health services	62,433	26.8%	-6.5%	-2.5%
Leisure and hospitality	32,132	13.8%	-1.8%	-1.2%
Other services	6,030	2.6%	-1.7%	-7.0%
Public administration	12,015	5.1%	-0.1%	-0.2%
<b>Total</b>	<b>233,359</b>	<b>100.0%</b>	<b>-2.1%</b>	<b>-1.0%</b>

### Employment by Industry (3rd Quarter 2017)

