

MOVING AMERICA'S ENERGY

Leveraging Commerce
to Drive Prosperity

Becoming the Energy Port of the Americas

Opened in 1926 and governed by a seven-member appointed Commission, the Port of Corpus Christi has become *the Energy Port of the Americas*.

Strategically positioned in the Gulf of Mexico, the Port has direct connectivity to the Eagle Ford and Permian Basin, ensuring the Port's position as America's energy export hub to the world.

The Port of Corpus Christi is the largest port in the United States in total revenue tonnage, managing a straight, 47-ft. deep channel (dredging to 54 ft.) with quick access to the entire U.S. inland waterway system, and the world beyond. The Port maintains various public liquid, dry and general cargo docks and facilities with connections to I-37 and US-181 for legal-limit and OS/OW project cargo.

La Quinta Channel

The La Quinta Ship Channel near Ingleside, Texas is strategically located in close proximity to the Eagle Ford Shale and Permian Basin oil producing regions of Texas. It is well positioned in relation to the Panama Canal, and is a short distance from the "blue water" of the Gulf of Mexico. Unlike the Houston Ship Channel, the La Quinta Channel is not congested, and is in an "attainment" area. With the lifting of the oil export ban, La Quinta Channel has become the main hub for the export of oil and related products from the Eagle Ford Shale and Permian Basin. The La Quinta Ship Channel is 45 feet deep and approximately 300 feet wide.

Shovel Ready Ingleside Marine Terminal Site

- » ± 2,434 feet of waterfront along the La Quinta Channel which has a 45-foot draft
- » US Army Corps of Engineers permit for two Aframax docks
- » Direct access to future HWY 200
- » Located in an attainment zone for air permitting
- » Limited vessel traffic/congestion in the La Quinta
- » Channel Accessible to Eagle Ford Shale with potential pipeline to the Permian Basin
- » Access to natural gas and other feed stock, power provided by AEP
- » Strategically located marine industrial site
- » Property serves the US Gulf Coast/US market gateway for both global and domestic opportunities

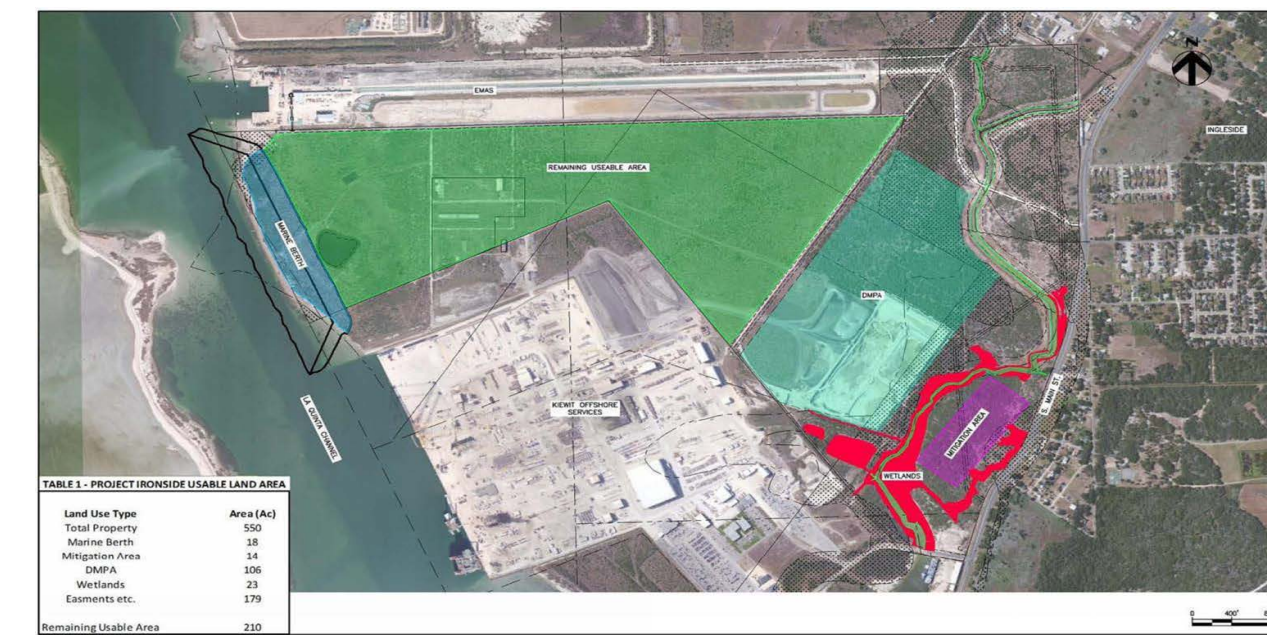
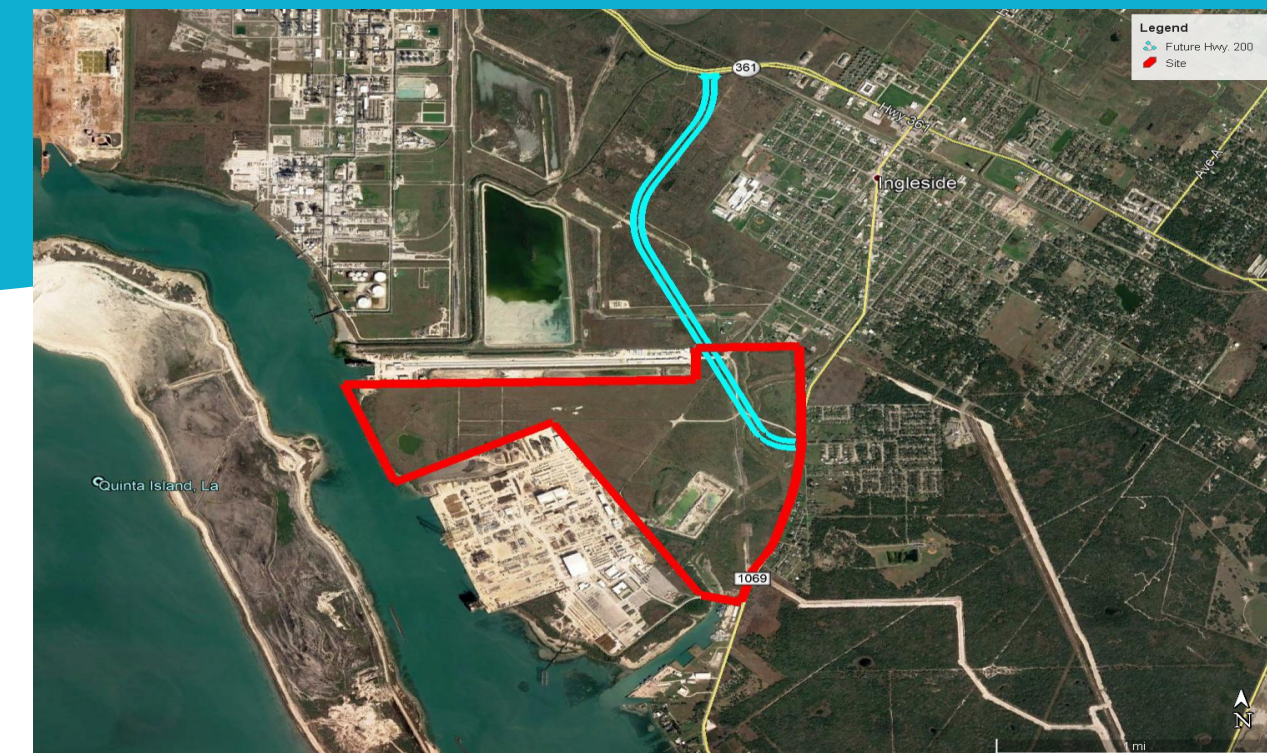


TABLE 1 - PROJECT IRONSIDE USABLE LAND AREA	
Land Use Type	Area (Ac)
Total Property	550
Marine Berth	18
Mitigation Area	14
DMPA	106
Wetlands	23
Easements etc.	179
Remaining Usable Area	210

The Port of Corpus Christi is committed to the health, safety and well-being of our employees, contractors, visitors, customers and the community by operating on the principles that we provide safe working conditions, that injuries are preventable, and that all employees share an obligation to ensure the safety of themselves and others. Our constant goal is to achieve a safe and incident-free work environment.

The Port Police and Security Department provide the maritime community with security and law enforcement services focused on stopping or limiting the effects of terrorism. The department provides a layered security structure including intelligent video analytics & surveillance, physical security barrier systems, radio communications systems and a TWIC-based access control system, along with scheduled patrols and investigation of suspicious activity. The Port of Corpus Christi holds a strong partnership with local, state, and federal law enforcement partners, thus affording the Port area a formidable Homeland Security support structure on land and water.

Environmental

All stevedores working on the Port are required to have an EMS for their operations, assure cargo movement occurs efficiently and in a manner that best protects the environment.

Established in 1985, Foreign Trade Zone #122 was the first continental zone with refinery subzones. In 2013, the Port of Corpus Christi reorganized and expanded FTZ #122 under the Alternative Site Framework (ASF). This ASF program provides greater flexibility and expedites access to the benefits of the FTZ program by using simpler procedures to bring designation to more locations. Under the ASF, FTZ #122 now includes seven counties within its service area – Aransas, Bee, Jim Wells, Kleberg, Nueces, Refugio, and San Patricio.

